



Complement

Technical
Data Sheet

Monoclonal Antibodies:

Anti-Mouse Factor B Antibody (Intact)

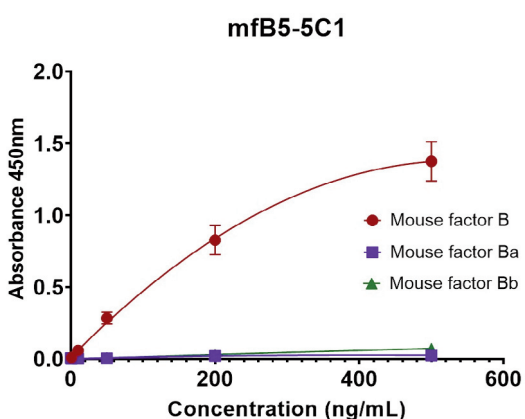
For **Research Use Only**. Not for use in diagnostic procedures

Background

Factor B is one of the complement proteins which is unique to the Alternative Pathway. It is a single-chain glycoprotein with a molecular weight of approximately 98 kD. The Alternative Complement Pathway provides innate protection against microbial agents in the absence of specific antibodies. The activation of this complement pathway can be triggered by a variety of substances, including microbial polysaccharides or lipids, gram-negative bacterial lipopolysaccharides, and surface determinants present on some viruses, parasites, virally infected mammalian cells, and cancer cells. In autoimmune diseases, the Alternative Complement Pathway may contribute directly to tissue damage.

Specificity

The specificity of the monoclonal antibody was established via a series of immunoassays. The antibody was shown by ELISA to bind highly purified mouse intact Factor B protein only, and not fragments Ba or Bb.



ELISA of various concentrations of mfB5-5C1 antibody and 2 μ g of coated Factor B, Ba, and Bb.

Specifications

Clone #: mfB5-5C1
Purity: \geq 85% by SDS Page
Concentration: 1 mg/mL
Immunogen: Recombinant mouse Factor B protein immunized in rat

Storage: \leq 30 days at 2°C to 8°C or > 30 days at -20°C
Isotype: IgG2bk
Buffer: PBS, pH 7.2
Volume/Vial: 100 μ L

Quidel | Specialty Products | Research to Rapids® | quidel.com | 800.874.1517 | 858.552.1100

TDA800000EN00 (10/22)

Anti-Mouse Factor B Antibody (Intact) – Cat. #A800

Also available:

Anti-Mouse Factor B Antibody (FB/Ba) – Cat. #A801

Anti-Mouse Factor B Antibody (FB/Bb) – Cat. #A802



QUIDEL

