



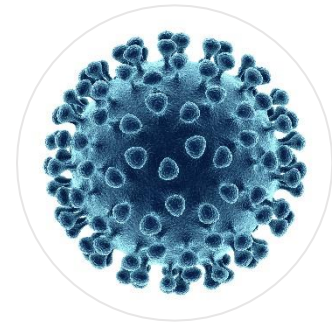
QUIDEL®

Technical Bulletin

COVID-19 Testing Antigen and Antibody Testing: What does each method offer?

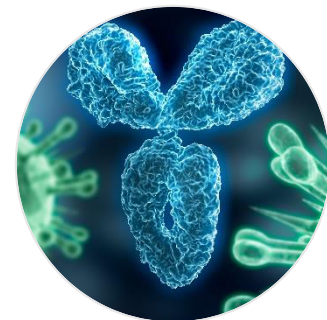
Antigen Tests

- An antigen is a molecule or structure present on the outside or inside of a pathogen.
- Antigen tests are typically used for early identification of an active infection in symptomatic patients.
- Quidel tests identify the viruses through detection of nucleocapsid proteins (SARS-CoV-2) and nucleoproteins (Influenza A and B).
- Viral antigens can often be detected in samples taken from nasal passages and from the throat.
- The Centers for Disease Control and Prevention recommends using a test that detects the SARS-CoV-2 virus, such as one that checks respiratory samples, to identify active infection.¹



Antibody Tests

- Antibodies are produced by the body's white blood cells to fight infections. They appear in the blood during infection and may remain in the blood after the infection clears.
- Serology tests identify active or past infections by looking for antibodies against the specific virus (IgM/IgG/IgA).
- The immune response may take time to show up in a serology assay after exposure to a pathogen.
- Antibodies are typically detected in blood samples--either whole blood, serum or plasma.
- Antibody tests typically cannot diagnose the disease immediately after exposure, as antibodies may take 1-3 weeks to develop.¹
- A positive antibody test may indicate that a person had an immune response to SARS-CoV-2 regardless of the presence of symptoms.² A vaccine response may also lead to a positive antibody test. Whether antibodies may indicate immunity to further infection is still being investigated by the healthcare community.



If you have any questions, please contact Quidel Technical Support at 1.800.874.1517 (in the U.S.) or technicalsupport@quidel.com. If outside the U.S., further information can be obtained from your

distributor, or directly from Quidel at one of the numbers listed below. Reference **quidel.com** to see more options for Support.

Country	Phone	E-Mail Address
Europe, Middle East and Africa	+353 (91) 412 474 (main) 0 1800 200441 (toll free)	emeatechnicalsupport@quidel.com
Austria	+43 316 231239	
France	0 (805) 371674	
Germany	+49 (0) 7154 1593912	
Netherlands	0 800 0224198	
Switzerland	0 800 554864	
United Kingdom	0 800 3688248	
Italy	+39 (800) 620 549	
North America, Asia-Pacific, Latin America	858.552.1100	technicalsupport@quidel.com
Canada	437.266.1704 (main) 888.415.8764 (toll free)	technicalsupport@quidel.com
China	0400 920 9366 or +86 021 3217 8300	chinatechnicalservice@quidel.com

You may also visit our website at **quidel.com** for information on Quidel’s line of Rapid Diagnostics, Molecular Diagnostics, Cell Culture and Specialty Products (Bone Health and Autoimmune & Complement). Other product information available on our website includes: CPT codes, CLSI procedure guides, SDS, and Package Inserts.

¹ <https://www.cdc.gov/coronavirus/2019-ncov/lab/serology-testing.html>

² <https://www.cdc.gov/coronavirus/2019-ncov/about/testing.html>