

## Chlamydiae



### Isolation and identification testing solutions

#### Cell Culture Is Still The Gold Standard

- Initial isolation and “proof of cure” Chlamydia culture can be performed on all specimen types, with results available in as little as 48 hours.

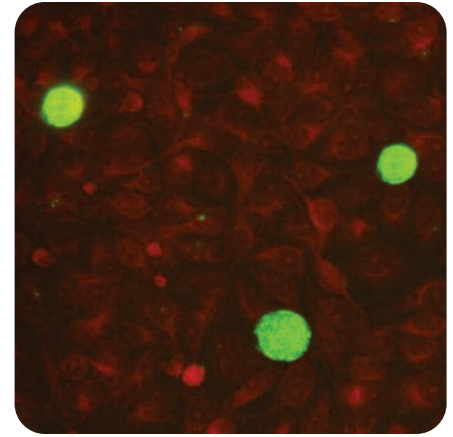
#### A Complete System Approach To The Isolation And Identification Of Chlamydiae spp.

- FLOQSwabs and Universal Transport Medium make specimen collection and transport easy and convenient. Chlamydia Isolation Medium optimized with cyclohexamide supports the isolation of all Chlamydia in cell culture, and maximum testing flexibility is guaranteed with multiple formats of BGMK and McCoy cells. The D<sup>3</sup> DFA Chlamydiae Culture Confirmation Kit with newly developed monoclonal antibodies is capable of detecting all 15 Chlamydia trachomatis serovars, Chlamydoghila pneumoniae, and Chlamydoghila psittaci.

#### Large Or Small Laboratories, Quidel Has A Solution To Match Your Needs

- Totally Tubeless cell systems are available in multi-well plates or shell vials for high-volume testing, or in single use frozen ReadyCells® for intermittent requests. Reagents and support materials, such as control stocks or slides, are available in multiple formats with excellent outdating to fit the needs of any laboratory.

McCoy cells infected with Chlamydiae, stained with  
D<sup>3</sup> DFA Chlamydiae Culture Confirmation Kit



### Recommended protocol



#### Individual Components

01-045005	Chlamydiae DFA Reagent (5 mL)
01-00010	Chlamydia Antigen Control Slides (20 per set, 10 positive, 10 negative)
01-090025	40X PBS Concentrate (25 mL)
01-002007b	Mounting Fluid (7 mL)
20-4310010	Chlamydia trachomatis Control Stock, LGV Strain (400 µL fill volume) (shipped frozen)
02-431024	Training Panel (24 vials, 0.6 mL fill volume) (shipped frozen)

#### McCoy FreshCells

##### Shell Vials

54-0102 Shell Vial (with coverslip)

#### Multi-well Plates

54-2412	24 well/12 fill
54-2418	24 well/18 fill
54-2424	24 well/24 fill
54-4812	48 well/12 fill
54-4818	48 well/18 fill
54-4824	48 well/24 fill

#### McCoy ReadyCells®

##### Shell Vials

F-54-0102-24 24 Shell Vials (with coverslip)

##### ReadyCells Heat Block

99-610-009 ReadyCells Heat Block (120 volts) (used for rapid, controlled thawing of ReadyCells)

#### BGMK FreshCells

##### Shell Vials

53-0102 Shell Vial (with coverslip)

##### Multi-well Plates

53-2412	24 well/12 fill
53-2418	24 well/18 fill
53-2424	24 well/24 fill
53-4812	48 well/12 fill
53-4818	48 well/18 fill
53-4824	48 well/24 fill

#### Detection Supplies

##### Media

10-340100 Chlamydia Isolation Medium

D<sup>3</sup> DFA Chlamydiae Culture Confirmation Kit – Cat. #01-040000

Includes: Chlamydiae DFA Reagent (5 mL), 40X PBS Concentrate (25 mL), Mounting Fluid (7 mL), Chlamydia Antigen Control Slides (5 positive, 5 negative)

SL0502 | SS2220000EN00 (04/17)

