

DFA Influenza A and RSV RESPIRATORY VIRUS SCREENING KITS



One stain, one filter . . . two results
dual fluorescent stain allows rapid detection and screening of
respiratory viruses in a single culture or a direct patient specimen

Proprietary Dual Fluorescent Technology Simplifies Workflow

- Allows for identification of either Influenza A or RSV while screening for 6 other respiratory viruses in cell culture using a multiplex monoclonal antibody format.

D³ Duet Kits Offer Superior Staining With The Use Of Fluorescein Isothiocyanate (FITC) And R-Phycoerythrin (R-PE)

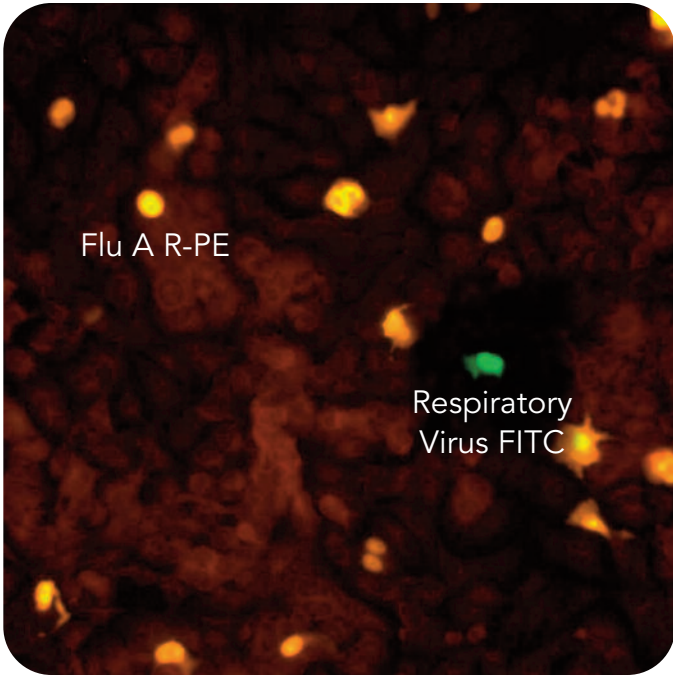
- The golden yellow fluorescence of R-PE is easily distinguished from the apple green fluorescence of FITC.

Results Can Be Read With A Single Fluorescent Filter Set For Ease of Use

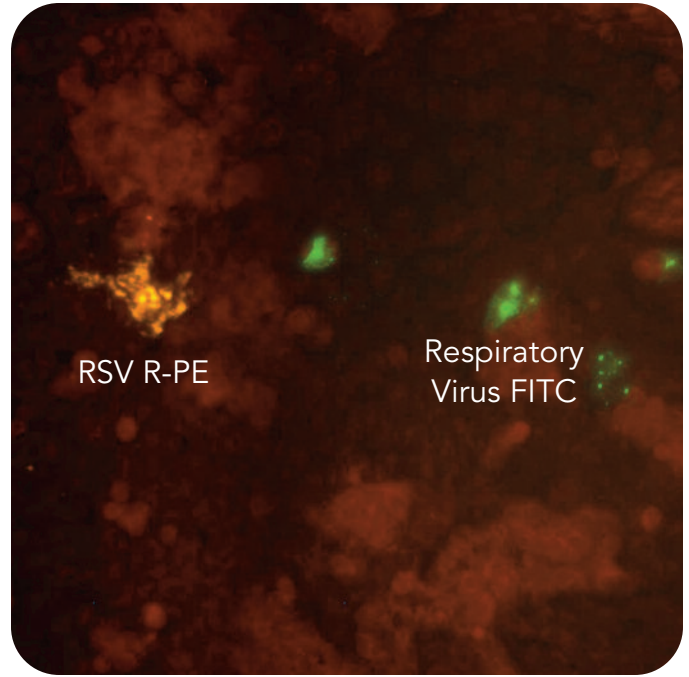
- By utilizing R-PE and FITC the need for two filters is eliminated.

One-step Direct Detection With a Single 15-Minute Incubation

- D³ Duet stains provide clean, crisp differentiation of respiratory viruses in 15 minutes.
- Improves workflow and laboratory time to result.



R-Mix cells infected with flu A, stained with D³ Duet Influenza A/Respiratory Virus Screening Kit



R-Mix cells infected with RSV, stained with D³ Duet RSV/Respiratory Virus Screening Kit

Individual D³ Ultra DFA Reagents

01-013102.v2	D ³ Ultra DFA Influenza A Reagent (2 mL)
01-013202.v2	D ³ Ultra DFA Influenza B Reagent (2 mL)
01-013302.v2	D ³ Ultra DFA RSV Reagent (2 mL)
01-013402.v2	D ³ Ultra DFA Adenovirus Reagent (2 mL)
01-013502.v2	D ³ Ultra DFA Parainfluenza 1 Reagent (2 mL)
01-013602.v2	D ³ Ultra DFA Parainfluenza 2 Reagent (2 mL)
01-013702.v2	D ³ Ultra DFA Parainfluenza 3 Reagent (2 mL)

Individual Kit Components

01-014005	Respiratory Viruses Antigen Control Slides (5)
01-11210	2-Well Specimen Screening Slide with Blotters (100)
01-11220	8-Well Identification Slide with Blotters (100)
01-015010	Normal Mouse Gamma Globulin DFA Reagent (10 mL)
01-001025	Wash Solution Concentrate, 40X (25 mL)
01-002015	Mounting Fluid (15 mL)
02-477020	Respiratory Viruses Training Panel (24 vials, 0.6 mL fill volume) (shipped frozen)

20-4700010	Respiratory Viruses, seven major, mixed Control Stock (Single Use, 400 µL) (shipped frozen)
20-4710010	Influenza A Virus Control Stock (Single Use, 400 µL) (shipped frozen)
20-4730010	Respiratory Syncytial Virus Control Stock (Single Use, 400 µL) (shipped frozen)

D³ Duet Influenza A/Respiratory Virus Screening Kit – Cat. #01-200000

Includes: D³ Duet DFA Influenza A/Respiratory Virus Screening Reagent (10 mL), Normal Mouse Gamma Globulin DFA Reagent (10 mL), 40X PBS Concentrate (25 mL), Mounting Fluid (15 mL), Respiratory Virus Antigen Control Slides (5)

D³ Duet RSV/Respiratory Virus Screening Kit – Cat. #01-210000

Includes: D³ Duet DFA RSV/Respiratory Virus Screening Reagent (10 mL), Normal Mouse Gamma Globulin DFA Reagent (10 mL), 40X PBS Concentrate (25 mL), Mounting Fluid (15 mL), Respiratory Virus Antigen Control Slides (5)

SL1703 | SS1630000EN00 (05/17)

