

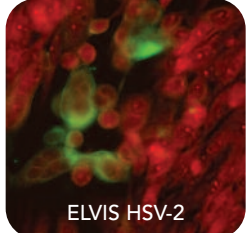
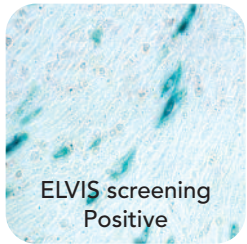
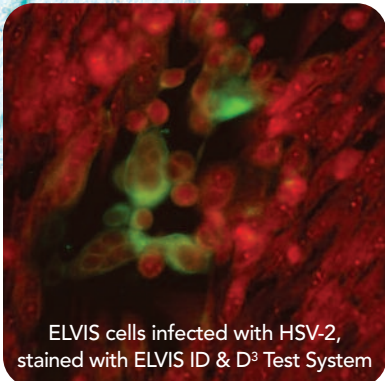
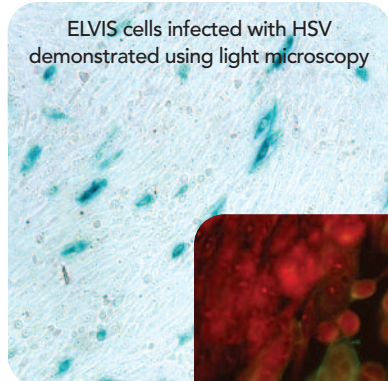
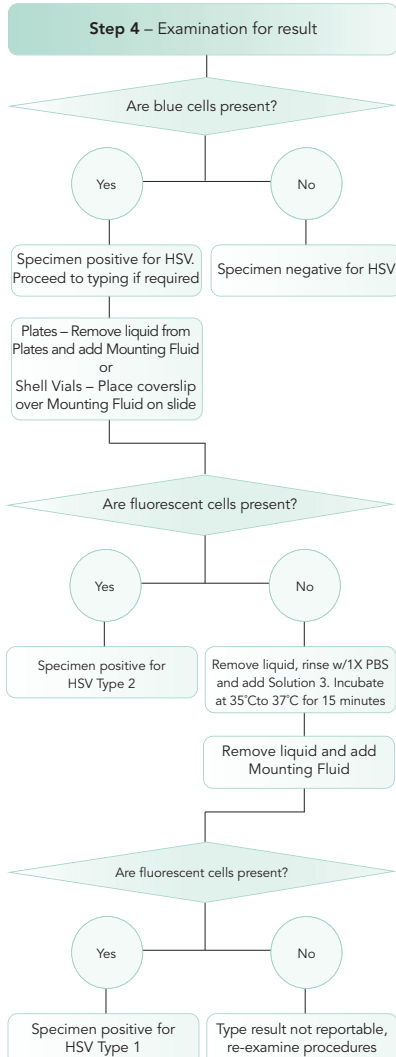
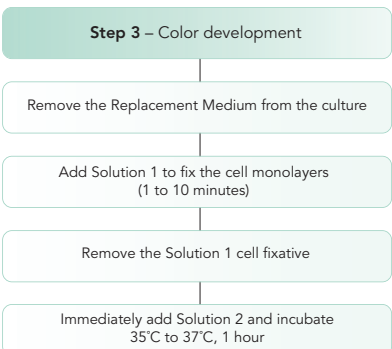
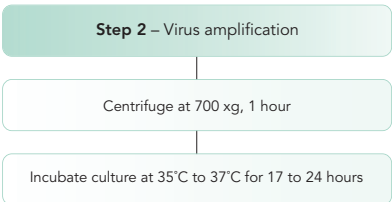
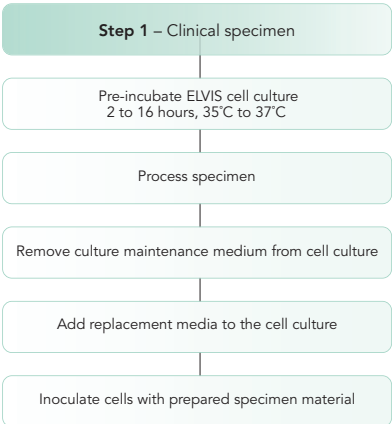
Herpes simplex Virus



Sensitivity of a 10-day cell culture in less than 1 day

- For rapid identification and typing of Herpes Simplex Virus.
- Overnight HSV detection system for culture confirmation of positive OR negative HSV-1 and HSV-2 infections.
- No fluorescence required for non-typing assay.
- Typing can be done in a single vial through sequential staining applications.
- Uses patented engineered BHK cells which produce a detectable enzyme when infected and ONLY when infected with Herpes simplex.

ELVIS[®] – Enzyme Linked Virus Inducible System



ELVIS HSV

Genetically Engineered BHK Cells

- 55-0101 ELVIS Shell Vial (no coverslip)
- 55-0102 ELVIS Shell Vial (with coverslip)
- 55-2406 ELVIS Multi-Well Plate (24 well/6 fill)
- 55-2412 ELVIS Multi-Well Plate (24 well/12 fill)
- 55-2418 ELVIS Multi-Well Plate (24 well/18 fill)

- 55-2424
- 10-220100
- 10-220500

- ELVIS Multi-Well Plate (24 well/24 fill)
- ELVIS Replacement Medium (100 mL)
- ELVIS Replacement Medium (500 mL)

02-480024.v2

Virus Training HSV Panel (24 vials, 1 mL fill volume) (shipped frozen)

- 20-4810020
- 20-4820020

- HSV-1 Virus Control Stock (Single Use, 400 µL) (shipped frozen)
- HSV-2 Virus Control Stock (Single Use, 400 µL) (shipped frozen)

- ELVIS ID Test System (100 Tests) – Cat. #SK-ELVIS-100
- ELVIS ID Test System (200 Tests) – Cat. #SK-ELVIS-200
- ELVIS ID Test System (500 Tests) – Cat. #SK-ELVIS-500
- ELVIS ID Test System (1000 Tests) – Cat. #SK-ELVIS-1000
- ELVIS HSV ID and D³ Typing Test System (60 Tests) – Cat. #SKT-ELVIS-60.V2
- ELVIS HSV ID and D³ Typing Test System (300 Tests) – Cat. #SKT-ELVIS-300.V2

